



WinCan

QGIS Plugin



Version: 0.9

Date: 27.06.2019

Table of Contents

1 General overview	- 3 -
2 Install plugin	- 3 -
3 Main Screen	- 3 -
4 Connection to WinCan VX	- 4 -
5 Data presentation	- 4 -
6 Data selected in WinCan VX	- 4 -
7 Transfer to WinCan VX	- 4 -
8 Reinitialize connection	- 5 -

1 General overview

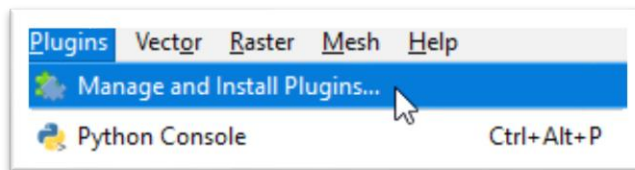
VX Plugin is a solution that gives you a possibility to integrate VX data with an open environment of QGIS. Using this extension you are able to download data, check its attributes, manage them and transfer back to WinCan VX.

Remember – Due to the fact that WinCan VX is a 32 bit program it is necessary to have QGIS 32bit.

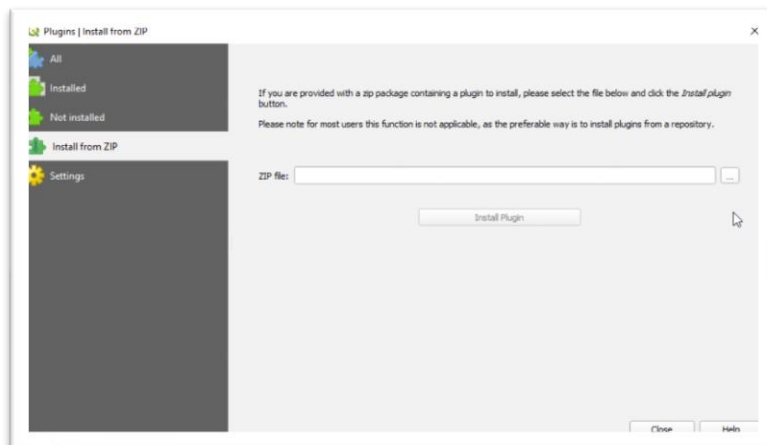
2 Install plugin

To have a possibility of using our product all you need to do is installing it. There are two possibilities:

- Install using official QGIS plugin repository:



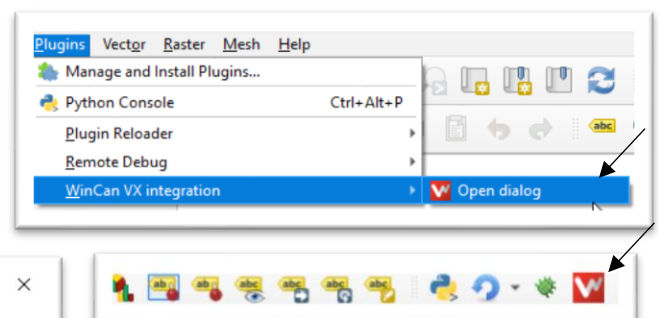
- Install using .zip archive:



When its done you are able to start using plugin.

3 Main Screen

The first thing you need to do is to start WinCan VX. After that you can easily open QGIS and from the plugins tab or using dedicated button open plugin main window:



4 Connection to WinCan VX

As a next step you need to establish connection with WinCan VX. To do that click Connect button. As a consequence you will see 6 shapefiles added to your QGIS canvas, project name displayed and 2 additional buttons that are now activated.



5 Data presentation

First feature that plugin has got is a possibility to look at the actual view of the map. This data has been downloaded from WinCan VX during connection. Right click on the layer gives a possibility to open attribute table and look at grid data like: manhole name, location etc. You are also able to look at this table by selecting some features.

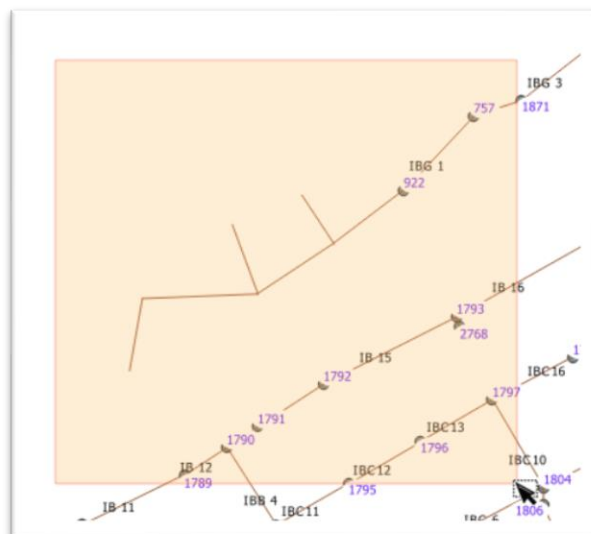
You do not have to take any further actions – all the deleted sections, manholes and other features will actualize during inspection.

6 Data selected in WinCan VX

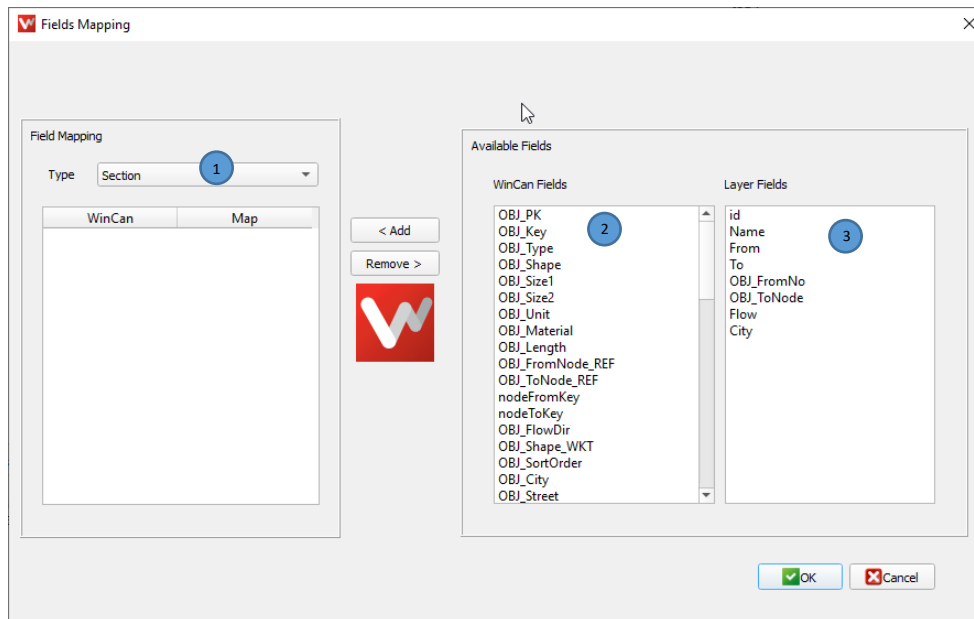
In case of a need to find a specific section or manhole you have a possibility to select them in the WinCan VX and they will be automatically selected and presented in QGIS.

7 Transfer to WinCan VX

After receiving a shape data from WinCan there is a possibility to send some additional data back to WinCan VX. If you have some layer (other than the WinCan ones) you can select some features that you want to add to your project:



Next click **To WinCan VX -->** and define a field mapping:



To do that you have to choose:

- Data type (1)
- WinCan reference field (2)
- Layer field (3)

For every pair of fields click add and at the end accept using OK.

This is all you need to do transfer data to WinCan VX. As a result you will see this features on the WinCan layers on both WinCan VX and QGIS.

8 Reinitialize connection

If your connection has been lost, or you have changed WinCan project you would need to

reconnect QGIS with WinCan VX. You are able to do that by pushing **Reinitialize** button. All features will disappear and connection will be established from scratch.